



Model SRI-7RS™

Pretorqued Safety Head



The SRI-7RS™ is a pre-torqued safety head designed for ease of handling and installation. The BS&B signature 'bite-seal' is present in all nominal sizes, optimizing leak tightness. The visible and accessible cap screws allow user confirmation of their presence and verification of applied torque in service. The unique shape of the SRI-7RS safety head enables excellent centering inside the bolt circle to maximize flow.

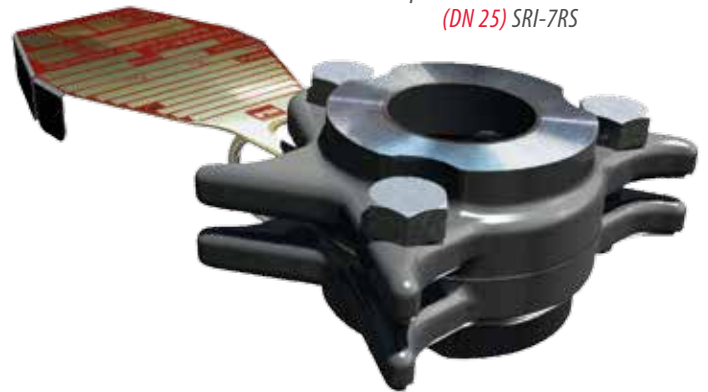
Features

- Pretorqued cap screws energize the seal between the rupture disk and safety head, independent of companion flange stud torque.
- Asymmetric locating pins center the rupture disk within the safety head.
- A j-bolt on the inlet side of the safety head ensures proper directional orientation between companion flanges.
- Locating pins are arranged to ensure that rupture disks are installed in the correct orientation within the safety head.
- The rupture disk dome is fully protected within the safety head inlet to avoid damage during installation in the piping system.
- The proprietary 'bite seal' is standard for SRI-7RS in all nominal sizes 1" thru 8" (DN 25 to DN 200). The bite feature optimizes sealing between the rupture disk and the process (inlet) side of the safety head.

Standard Materials

316 stainless steel, carbon steel, Monel® Alloy 400, Inconel® Alloy 600 and Hastelloy® C-276. *Hastelloy® is a trademark of Haynes International Inc. Monel® and Inconel® are trademarks of Special Metals Corporation.*

Rupture Disk installed in a 1" (DN 25) SRI-7RS



Rupture disk types for use in SRI-7RS safety heads		
Sigma	LPS	FRS
Sigma EXL	S-90	FRL
SK _r	JRS	RLS

Note: Safety head choices for the above includes SRI-7RS, SRB-7RS and SRB-7FS.

SRI-7RS Safety Head Specifications

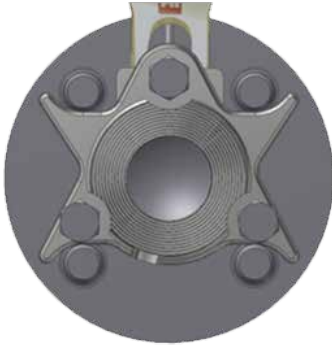
Size		Safety Head Flange Rating			Safety Head Thickness Without Rupture Disk	
in	DN	ANSI / ASME B16.5	EN 1092-1 GOST 12815-80	JIS B220	in	mm
1	25	150/300/600	10/16/25/40	10/16/20/30/40	1.5	38
1.5	40	150/300/600	10/16/25/40	10/16/20/30/40	1.7	43
2	50	150/300/600	10/16/25/40	10/16/20/30/40	1.9	48
3	80	150/300/600	10/16/25/40	16/20/30/40	2.2	55
4	100	150/300*	10/16/25/40	16/20/30/40	2.9	73
6	150	150/300*	10/16/25/40	10/16/20/30	3.6	92
8	200	150/300*	10/16/25/40	16/20/30	3.8	95

* Available for ANSI 600# with adapter ring. Consult BS&B or your local representative.

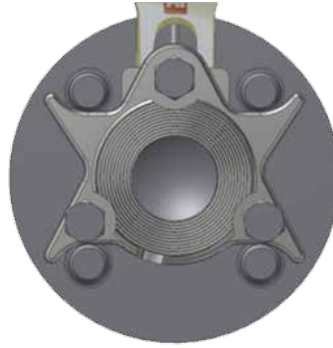
Flange Bolt Patterns

ANSI / ASME B16.5 150lb configurations shown.

1" (DN 25) SRI-7RS



1.5" (DN 40) SRI-7RS



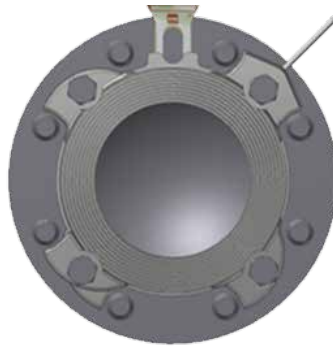
2" (DN 50) SRI-7RS



3" (DN 80) SRI-7RS*



4" (DN 100) SRI-7RS*



6" (DN 150) SRI-7RS



8" (DN 200) SRI-7RS



* 3" (DN 80), 4" (DN 100) and 8" (DN 200) not suitable for use with JIS 10 flanges.



BSBSystems.com | BSB.ie

Visit our website for the most complete, up-to-date information

Products, specifications and all data in this literature are subject to change without notice. Questions regarding product selection and specifications for specific applications should be directed to BS&B. All sales are subject to the BS&B companies' standard terms and conditions of sale. Nothing herein should be construed as a warranty of merchantability or fitness for a particular purpose.